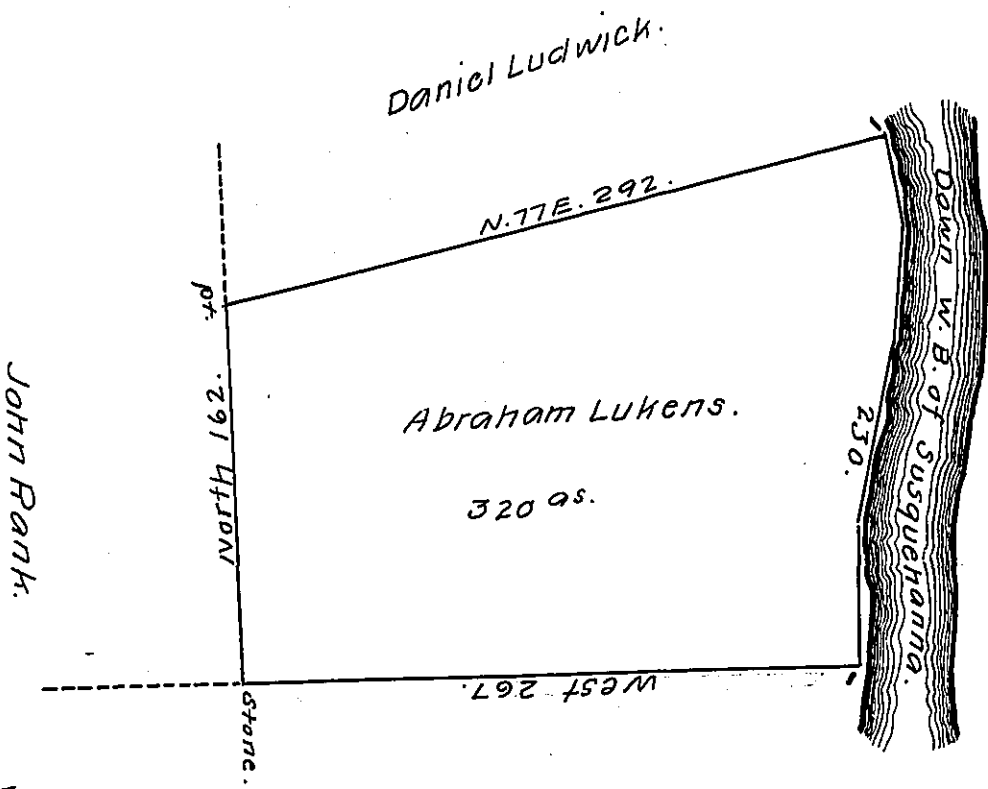


FORM NO 1.



Down River
Cor. & Dist. of

S. 10	E. 42
S. 7	W. 48
S. 11 1/2	W. 80
S. 3	W. 60
<hr/>	
250.	

The heirs of John Potter Decd.

Situate in White Deer township Union (late Berks) county Surveyed
 the 29 day of August 1832 by virtue of an order dated the 3d day of A-
 pril 1769 N^o 1966 Granted to Abram Lukens Containing three hundred
 & twenty Acres with the Usual Allowance &c

Note The same tract of land was surveyed the — day of — for Eliz-
 abeth Blyth in pursuance of her Order dated the 3d day of April 1769 N^o
 515 And now owned & occupied by Samuel Hepburn Esq. in right of the
 said Elizabeth Blythe.

To Jacob Spangler Esqr, } P^r J^r Hayes, Cor.
 Surveyor General Penn^a. }

IN TESTIMONY that the above is a copy of the original remaining on file in
 the Department of Internal Affairs of Pennsylvania, made
 conformably to an Act of Assembly approved the 16th day of
 February, 1833, I have hereunto set my Hand and caused
 the Seal of said Department to be affixed at Harrisburg,
 this tenth day of February 1909.

Henry Horck
 Secretary of Internal Affairs.